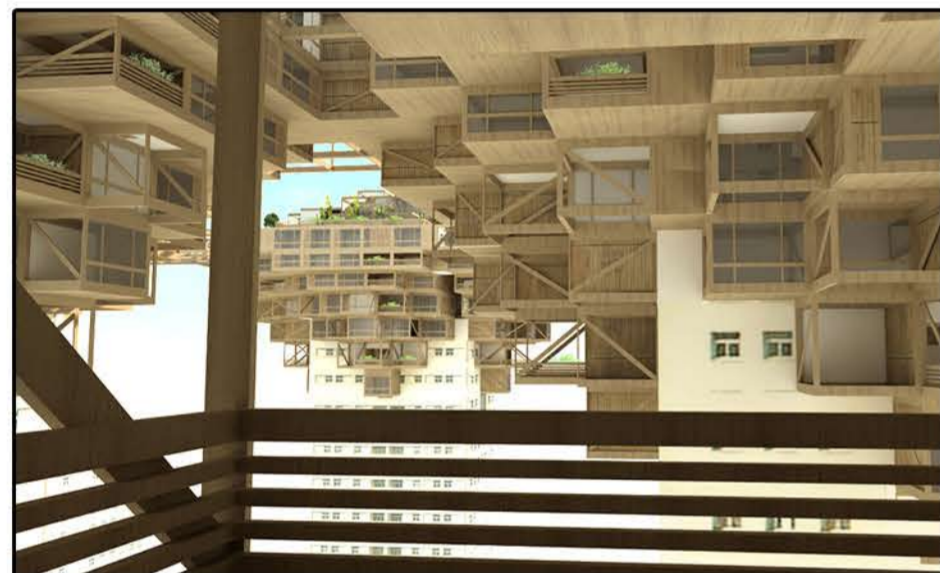


The CITY ABOVE The CITY

Expansion

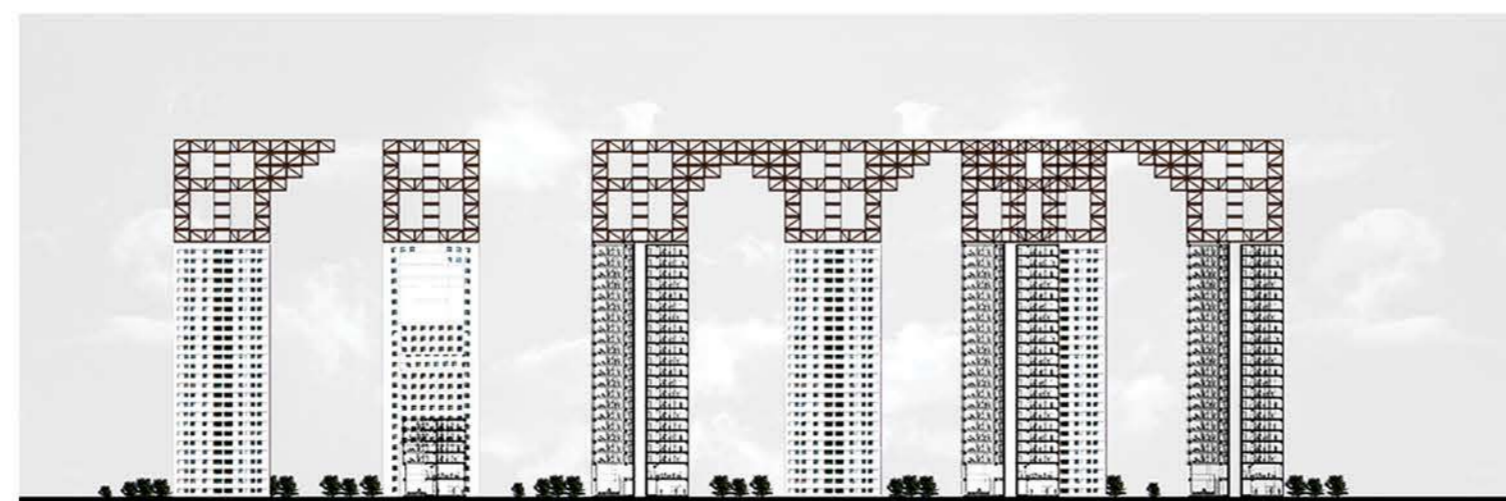
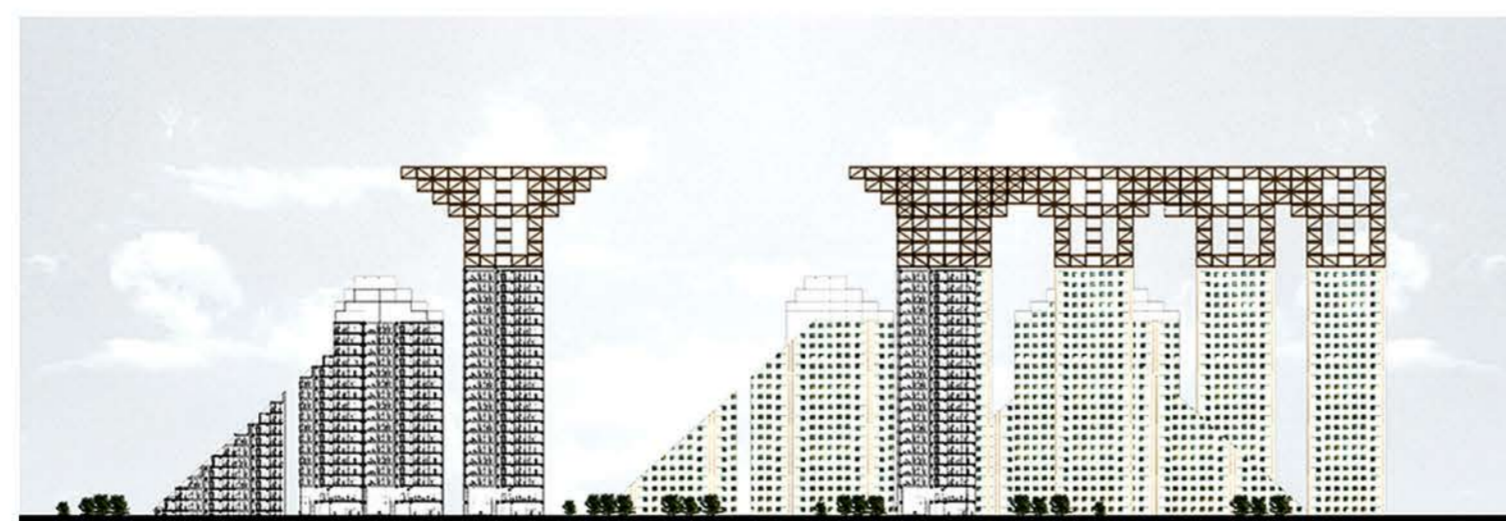
According to the competition demands toward increasing housing in future, we consider any time housing increase in this design, in a way that cubic modules are empty slots which are frame structure and could be used any time by adding leno wall panels.



Structure

The Wooden branching structure includes wooden braced frames. Four cores are placed in the middle of the roof edges and braced to each other on the bottom, the middle and top. All of this structure is made by integration of cubic modules which its components are fabricated in factory and would be assembled in the site.

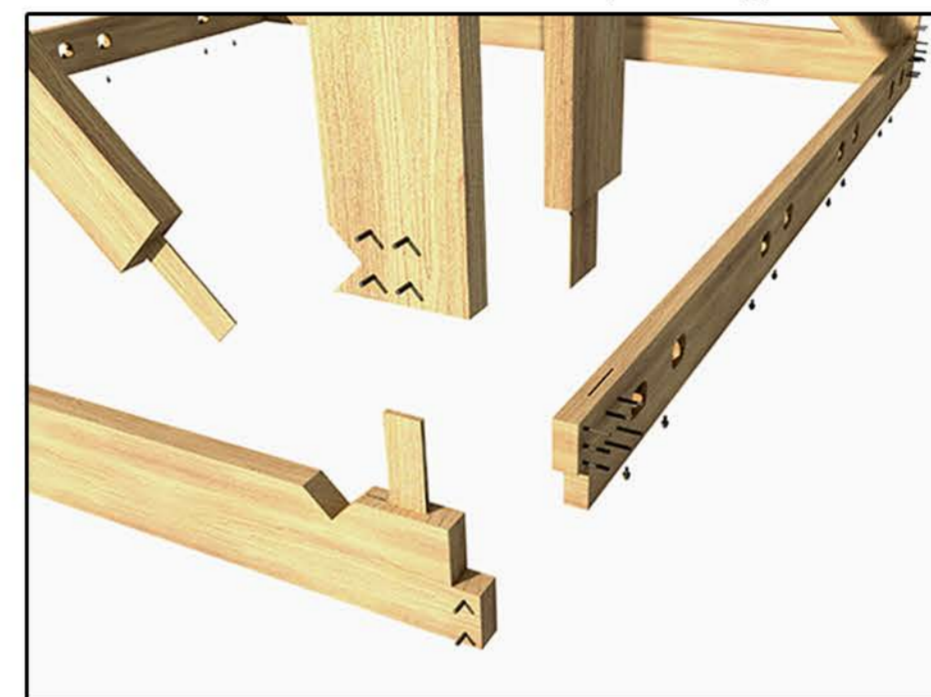
Each of this cubes are fixed modules with 5*5*4 or 5*5*3 dimensions and would be transferred to the building roof by crane and connect to each other by special connections to form the entire structure. So most of timbers do not exceed 5 meters in length with the exception of the +(plus) form component in the upper part which lay on cores and the other cubic modules are connected to this structure, its overall length is 75 meters and is made by integration of three 25 meter strong member which is the maximum length for metsawood timbers.



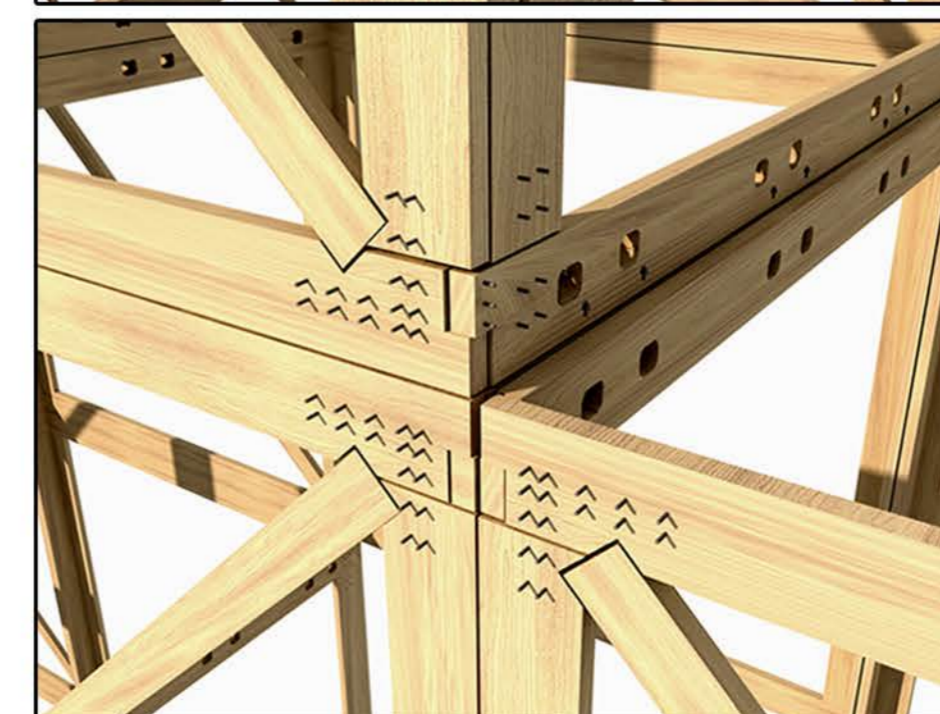
Structural section diagrams



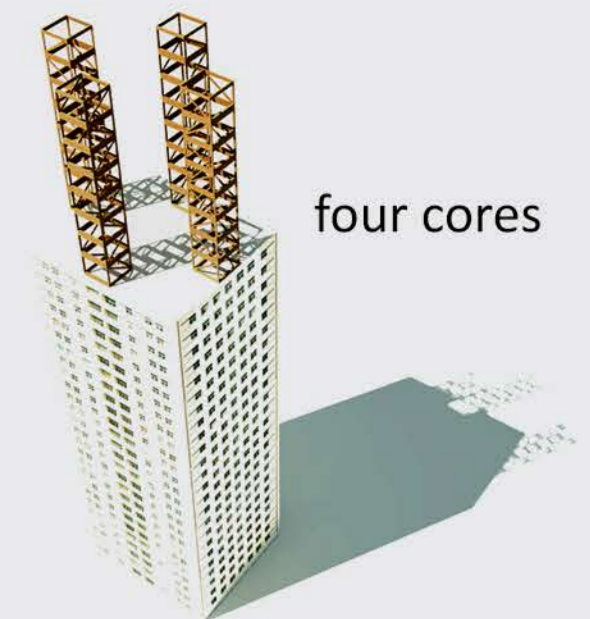
Cubic modul members exploding model



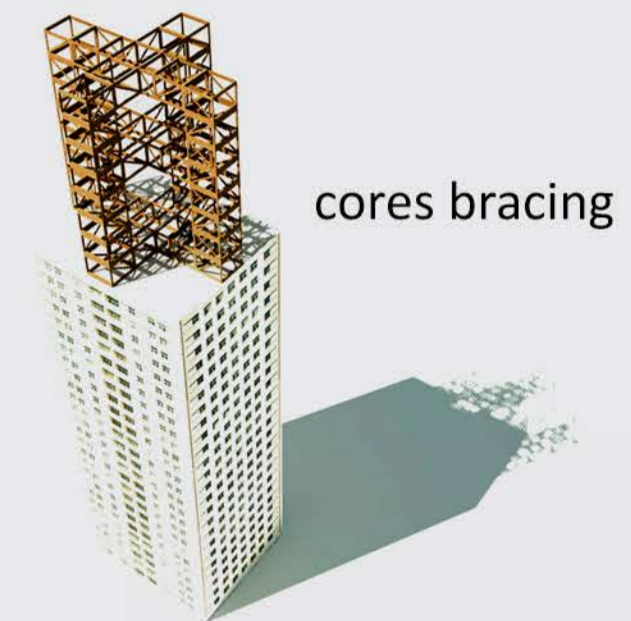
members connection exploding model



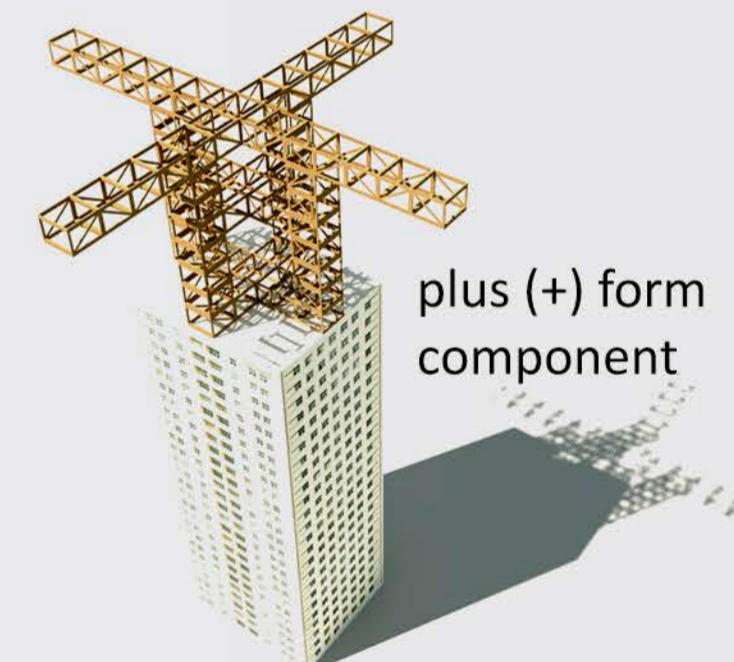
members connection



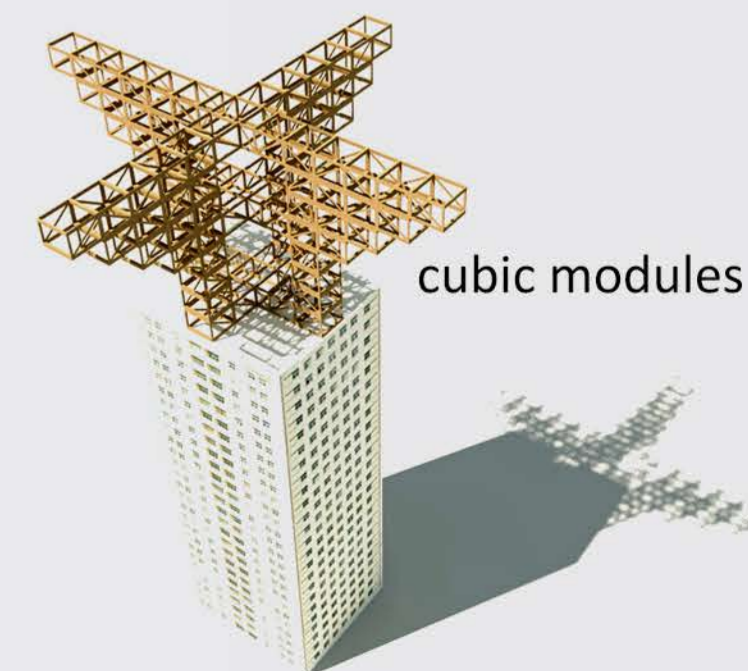
four cores



cores bracing



plus (+) form component



cubic modules