

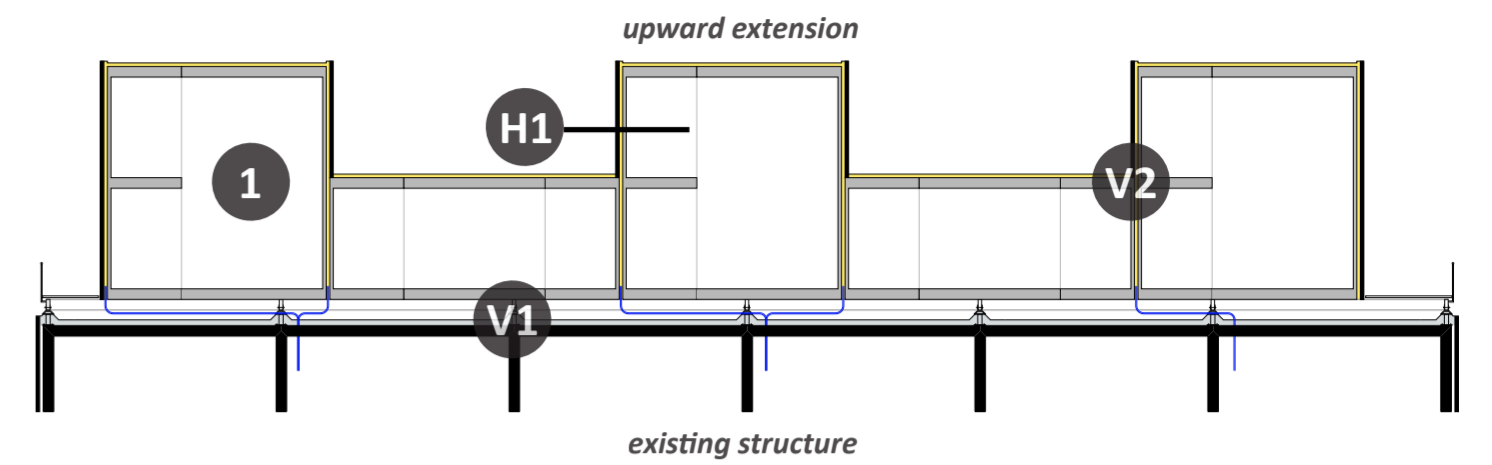


interior perspective view : location 2 Hatfields

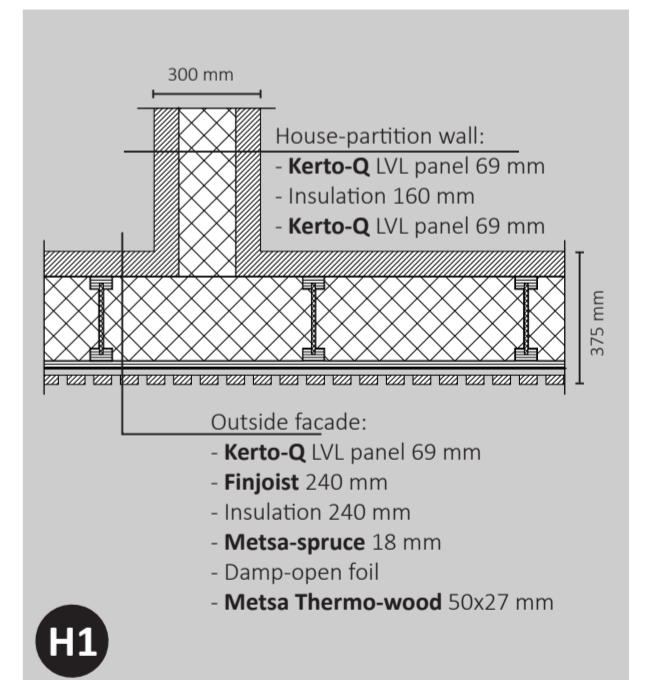
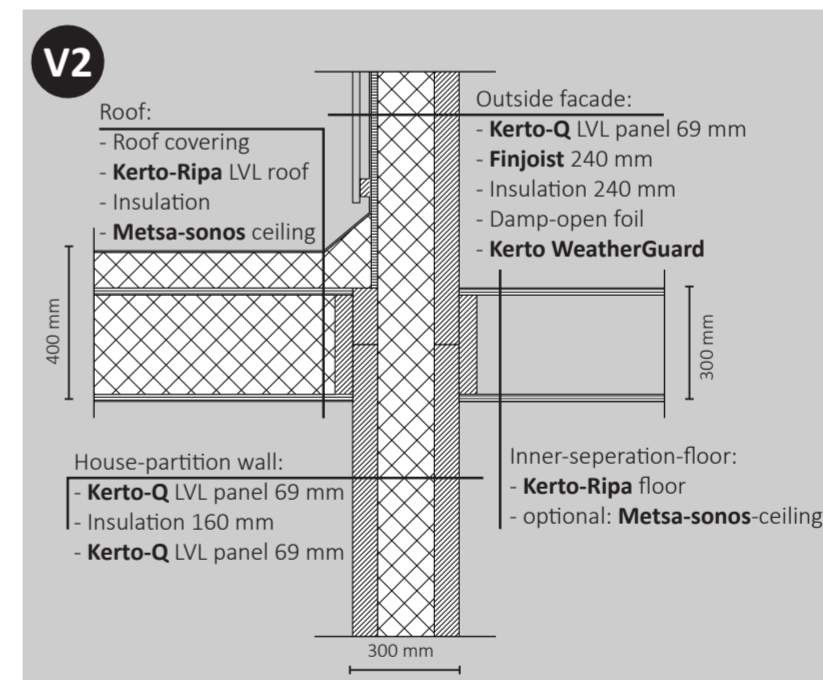
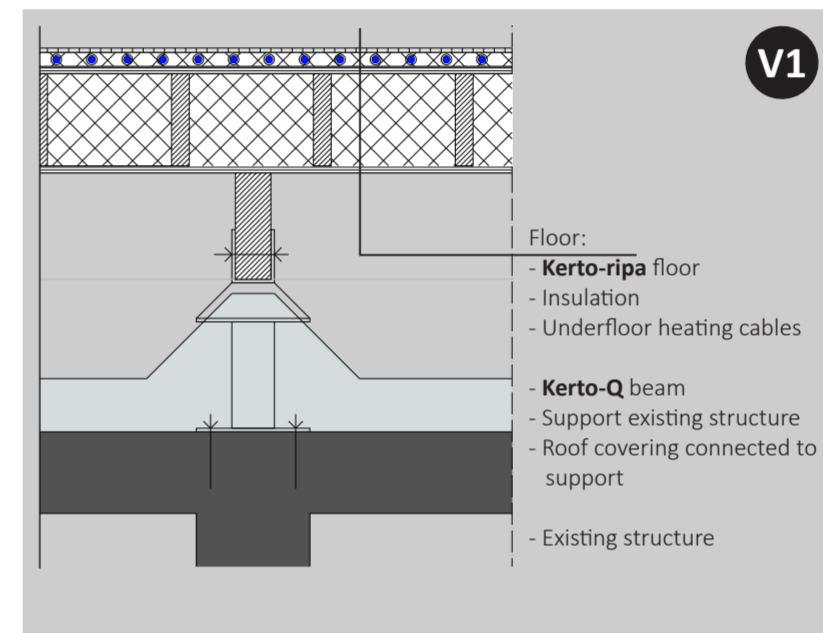


interior perspective view : location 3 The Cut

B L O C K K I E S



The light weight structures of **Metsawood** makes it easy to use existing structures as a base to **extend upwards**. The timber frame structure makes it possible to realise **high insulation** values. The empty wooden structure of the blokkie allows the inhabitants to build in additional separation walls and floors. **Prefabricated** elements of the timber frame allow for quick on site manufacturing and create a structure which can in time be **disassembled**. This latter aspect makes the application of blokkies suitable for **temporary** use as well as **permanent** use.



Metsawood helps to lower the **global warming potential** due to the carbon stored in wood. **Solar panels** can be added to the facades or on the roof of every dwelling to generate sustainable electricity. In every blokkie a battery will be provided for the **storage of electricity**. The heating will be provided by a **low temperature floor heating system**. **High temperature cooling** is also possible with the same installation. The lower ceiling zone in the service-units contains the basic distribution of fresh air based on a **warmth regaining ventilation system**.

