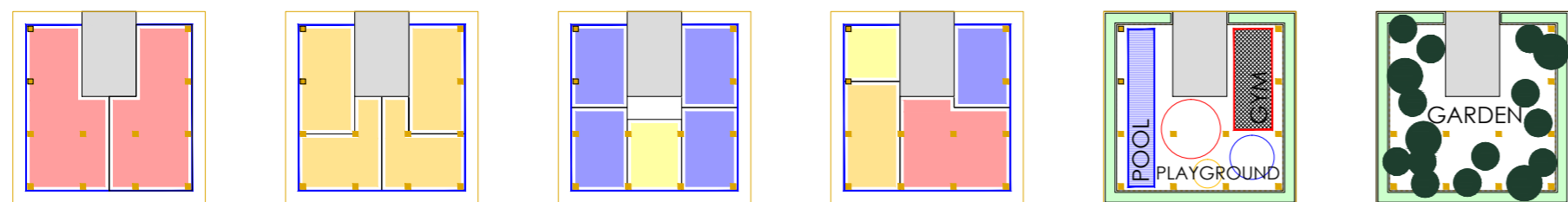


SCALE 1/100

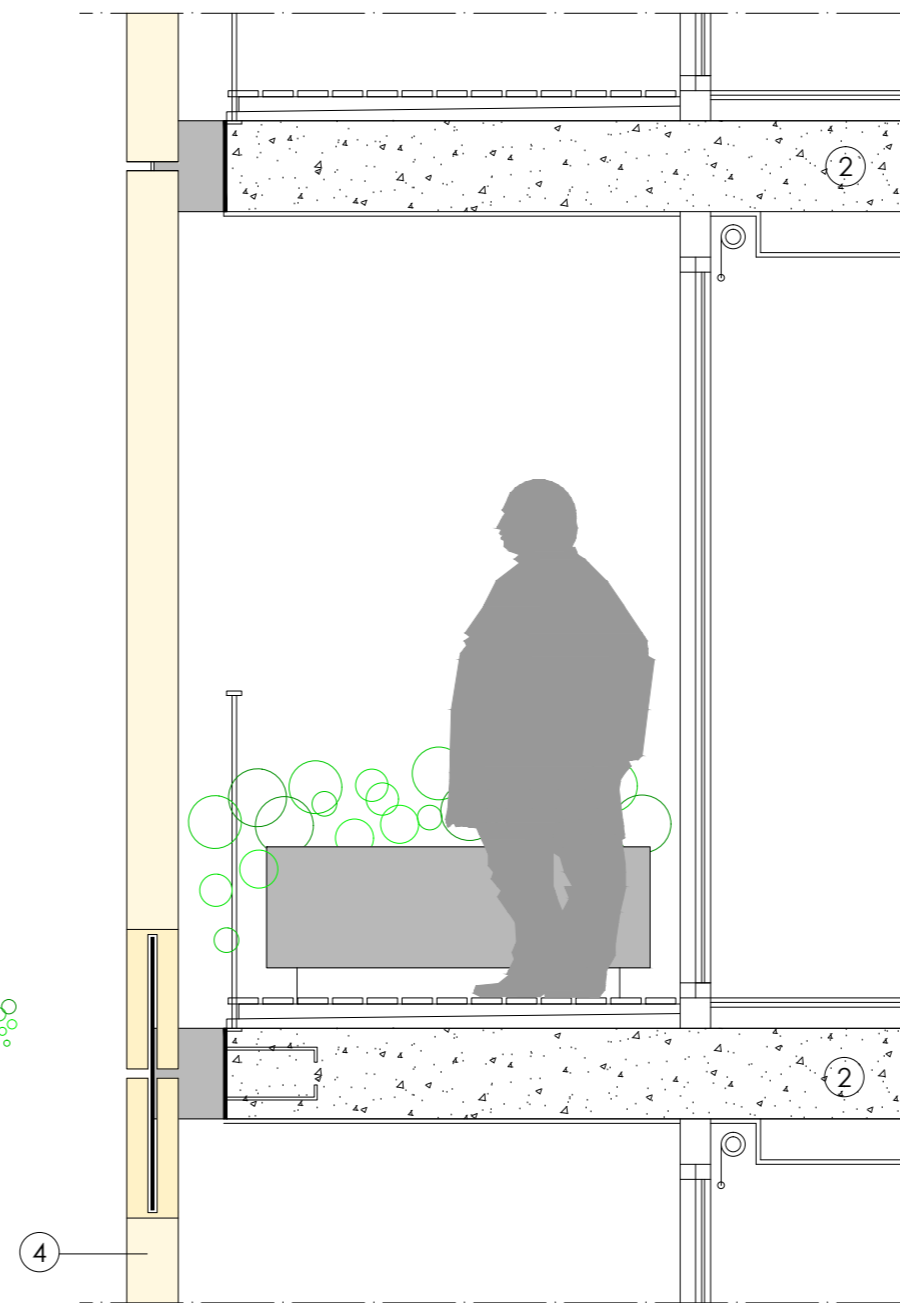


- 4 BED APARTMENT - 155 SQM
- 3 BED APARTMENT - 90 SQM
- 2 BED APARTMENT - 60 SQM
- 1 BED APARTMENT - 40 SQM

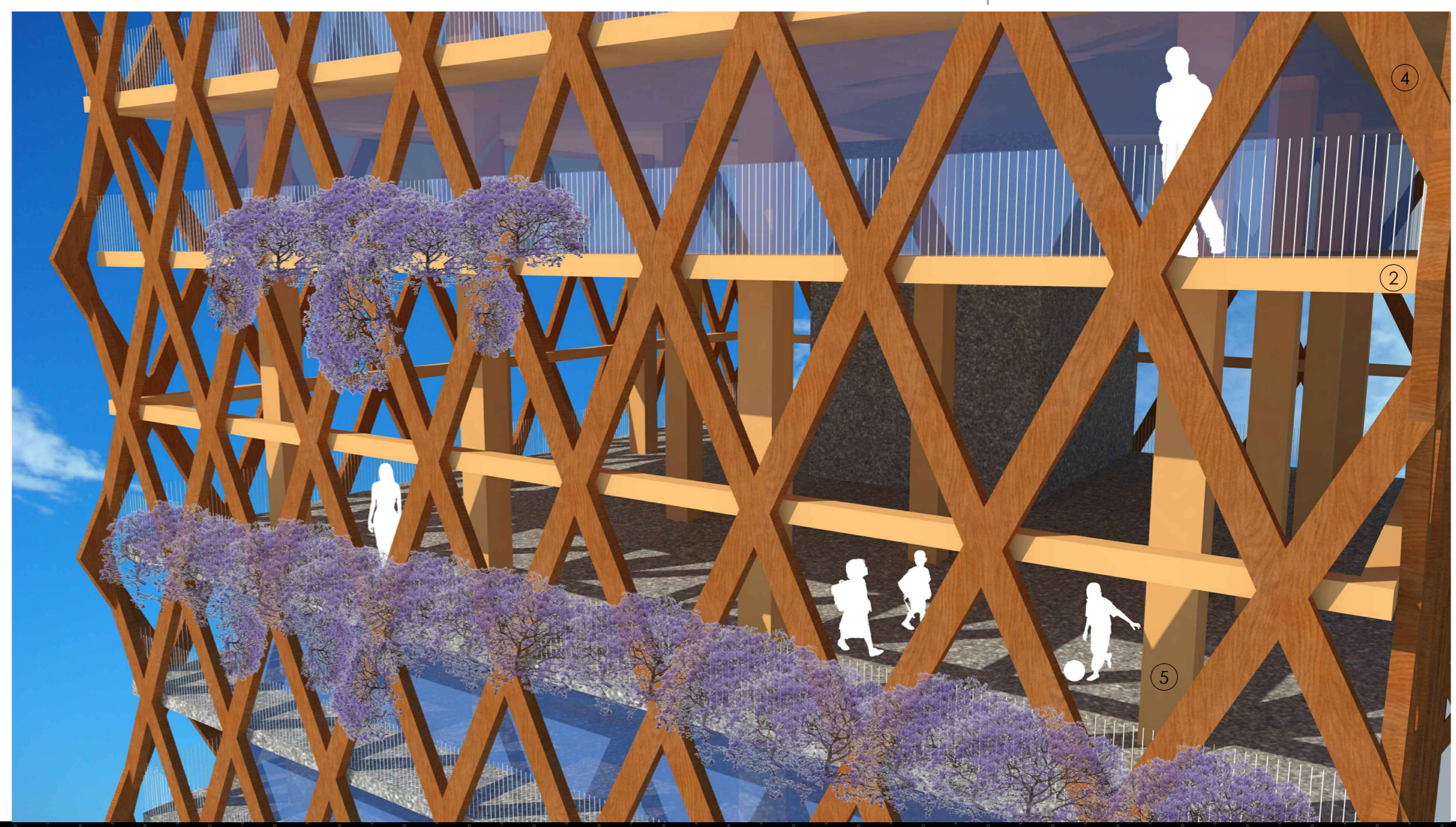
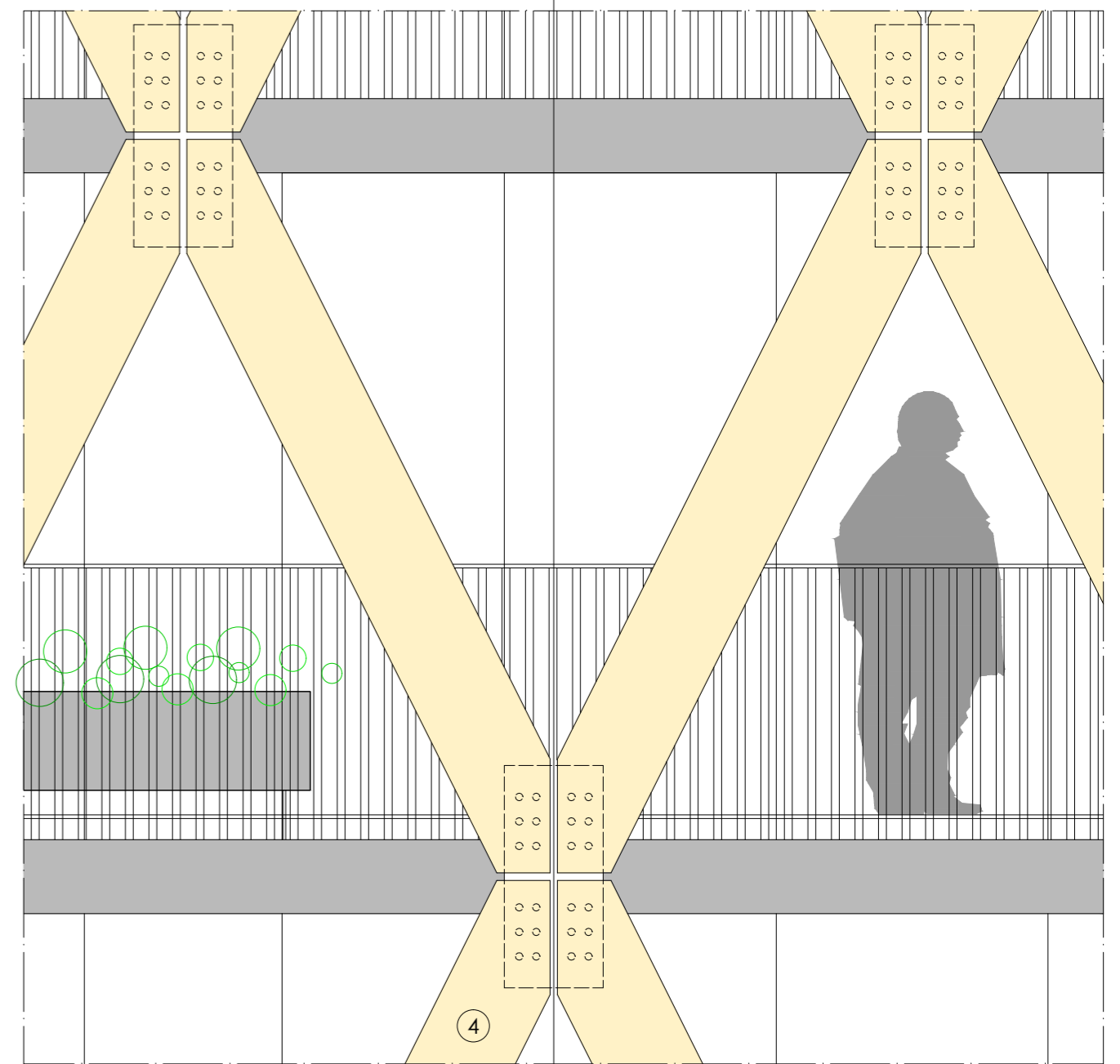
- ① KERTO-T LVL WALL STUDS
- ② KERTO-S LVL BEAM
- ③ KERTO-Q LVL PANEL
- ④ KERTO-Q ROOF PANEL
- ⑤ KERTO-PILLAR

FLOOR 13

FLOOR 19



FACADE DETAIL  
SCALE 1/25



# CRIS-EXIT 4/4

One very important in this city and in this project aspect is the vegetation and passive systems for power generation. We proposed to create large areas of trees and garden contributes to shadows during the season with more heat and decreases the overall temperature. It is incorporated in different ways, in all the terraces of the houses large planters that produce shade in summer and let the sun in winter spending will be installed. On the roof a large garden is generated as building protection and building opened space and enjoyment. Throughout the plot planting large trees and urban gardens for community use is proposed, thus generating work and economy is promoted.

We think with this proposal is improved the life of the people of the building and the city.