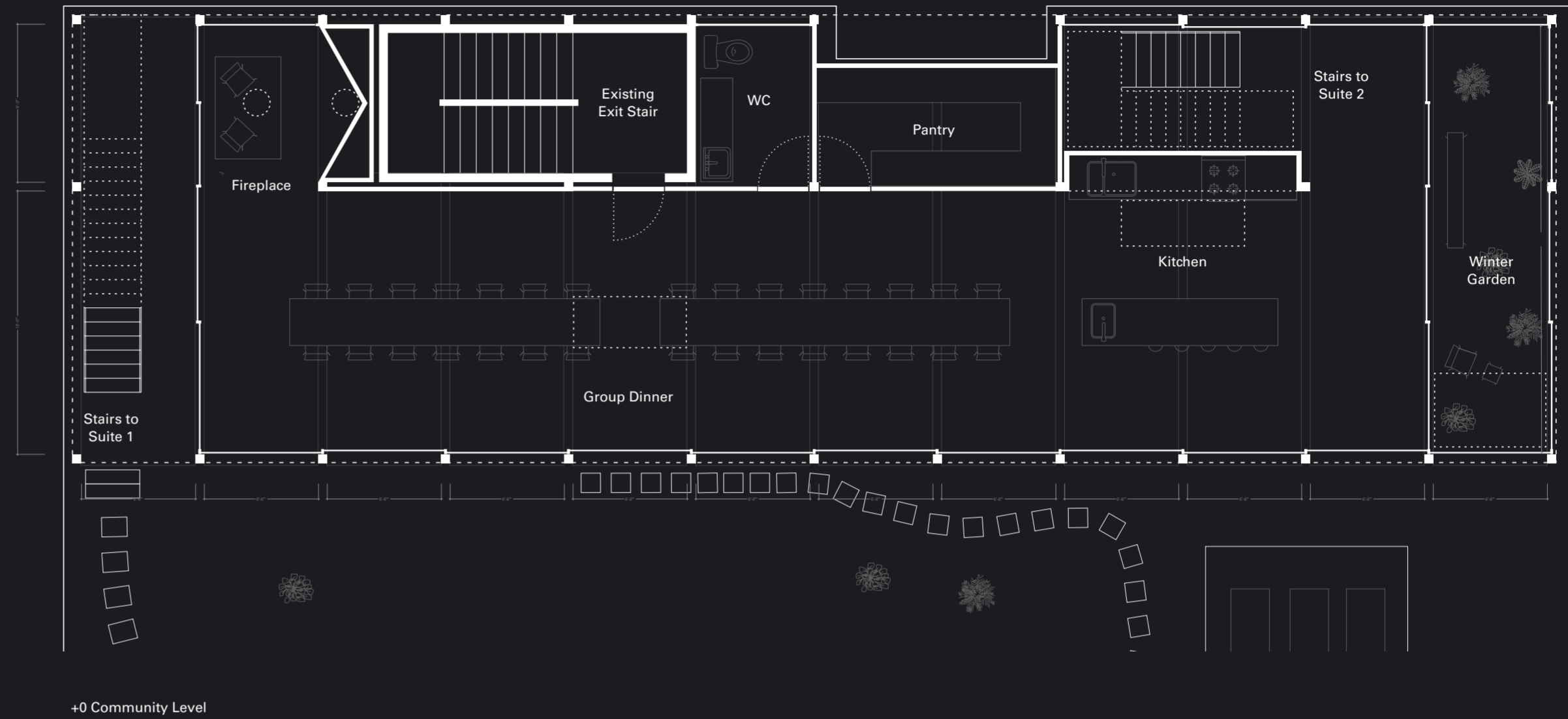
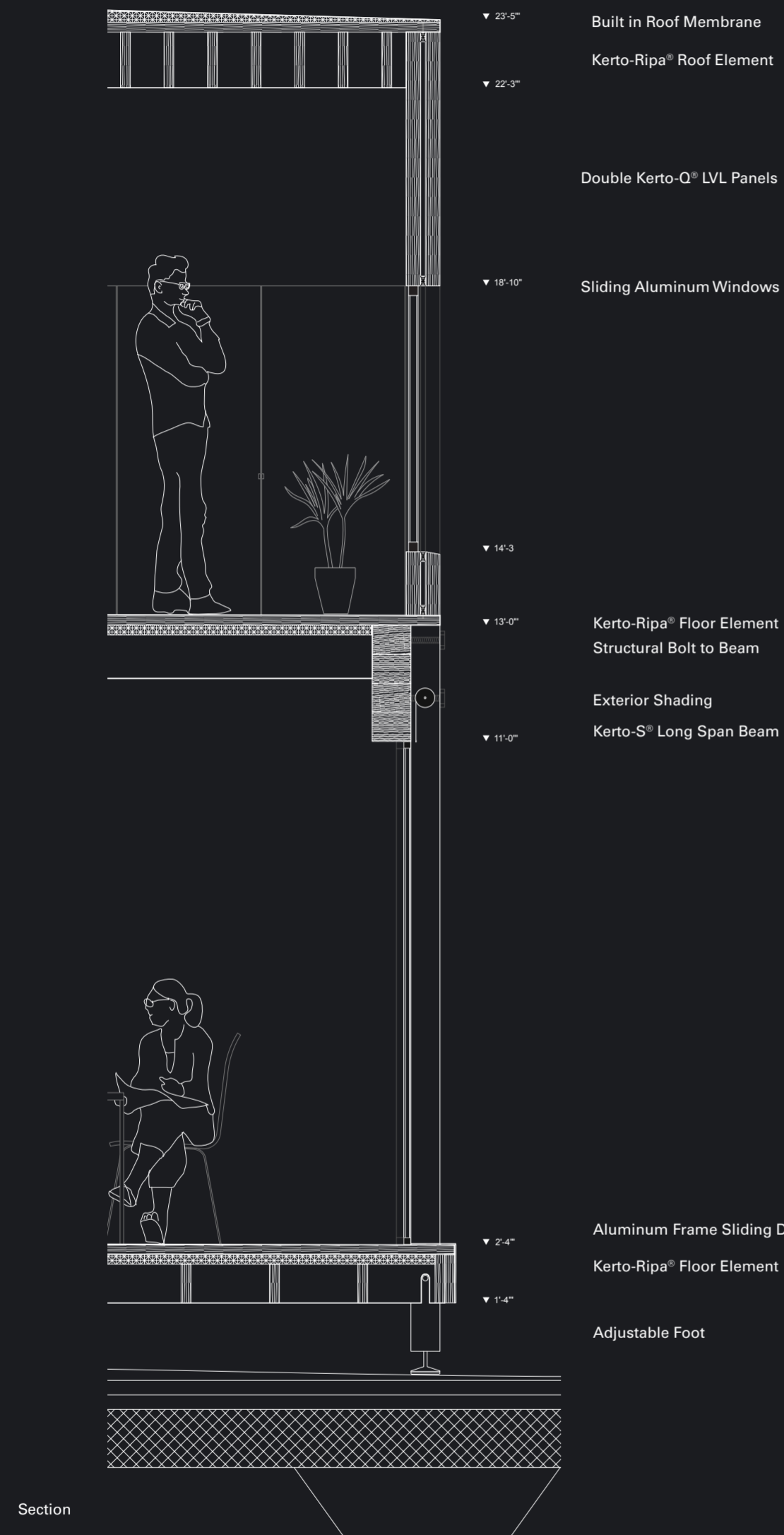


Dear Landlord,



Detail Section: each level uses a Kerto-Ripa® floor or roof element in a different way. On the ground floor the element sits in between two columns, on the middle level the element sits on top of a Kerto-S® beam and the roof it rests on Kerto-Q® LVL Panels.

Plans: The community level has a shared table which opens up entirely to the southern rooftop farm. The domestic studios use double-wall Kerto-Q® LVL panels allowing large sliding windows to completely disappear.