

Parking current plan

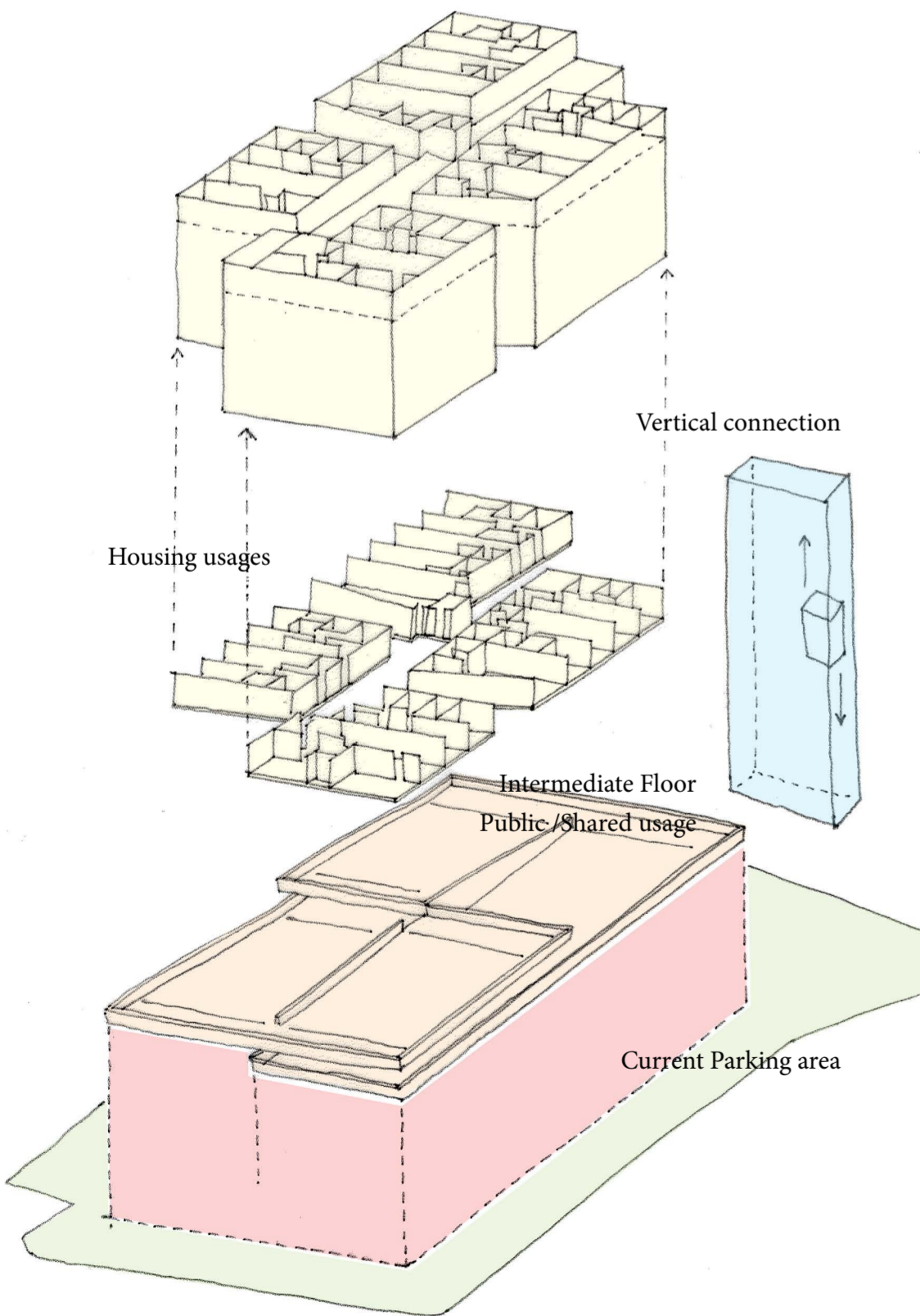
Given the structural strength of the park houses, The Kerto model provides a lightweight solution allowing for the transformation of these structures into multi-functional buildings that best serve the needs of city centers. Spaces that were once ignored and seen as gray zones would become a place of activity and interaction without the need to demolish the original structures.

Hence, the transformation of this parking house is seen as a sparkle to initiate a larger refurbishment and extension strategy for the parking houses in the center within the sustainable development vision of the city and the country in general.

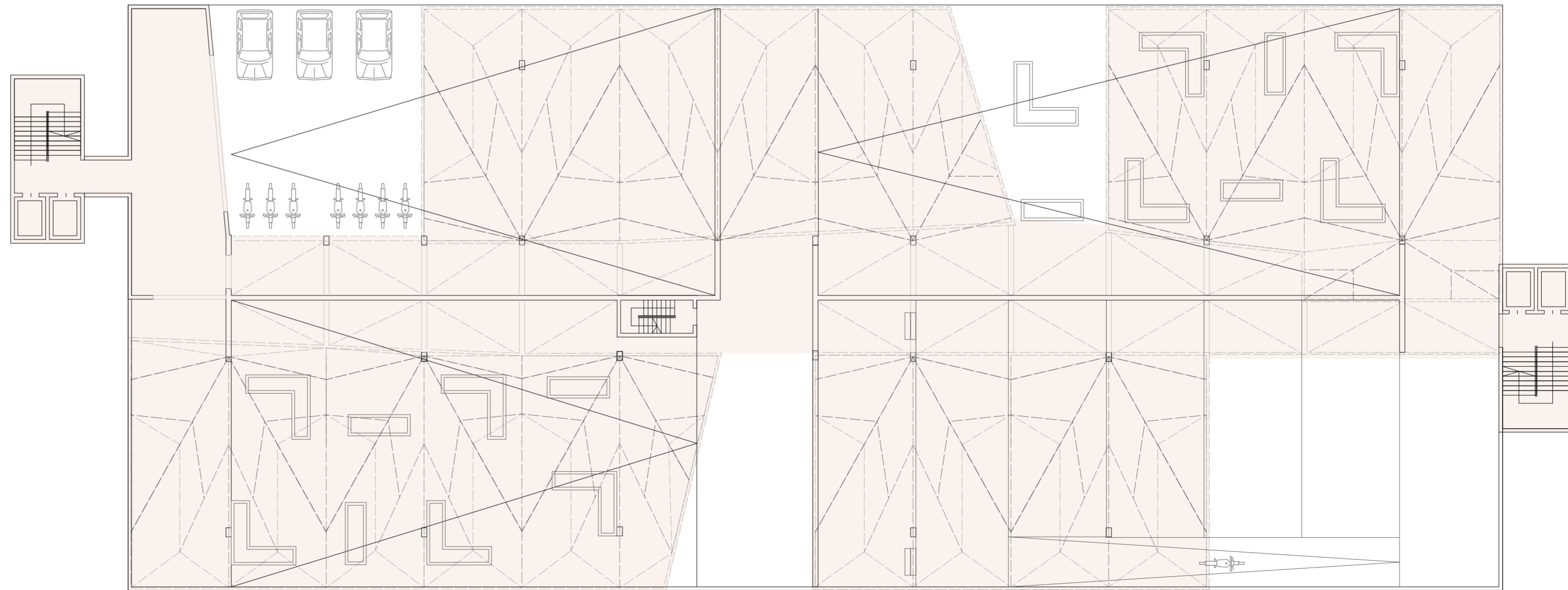
Even though that the suggested main use is residential, the introduction of urban activities such as urban gardening, open theaters, mobility station ...etc., is fundamental in order to strengthen and maintain the linkage between the project and its surrounding.



Floor plan (housing)
1:200



Usages diagram



Intermediate floor plan
1:200