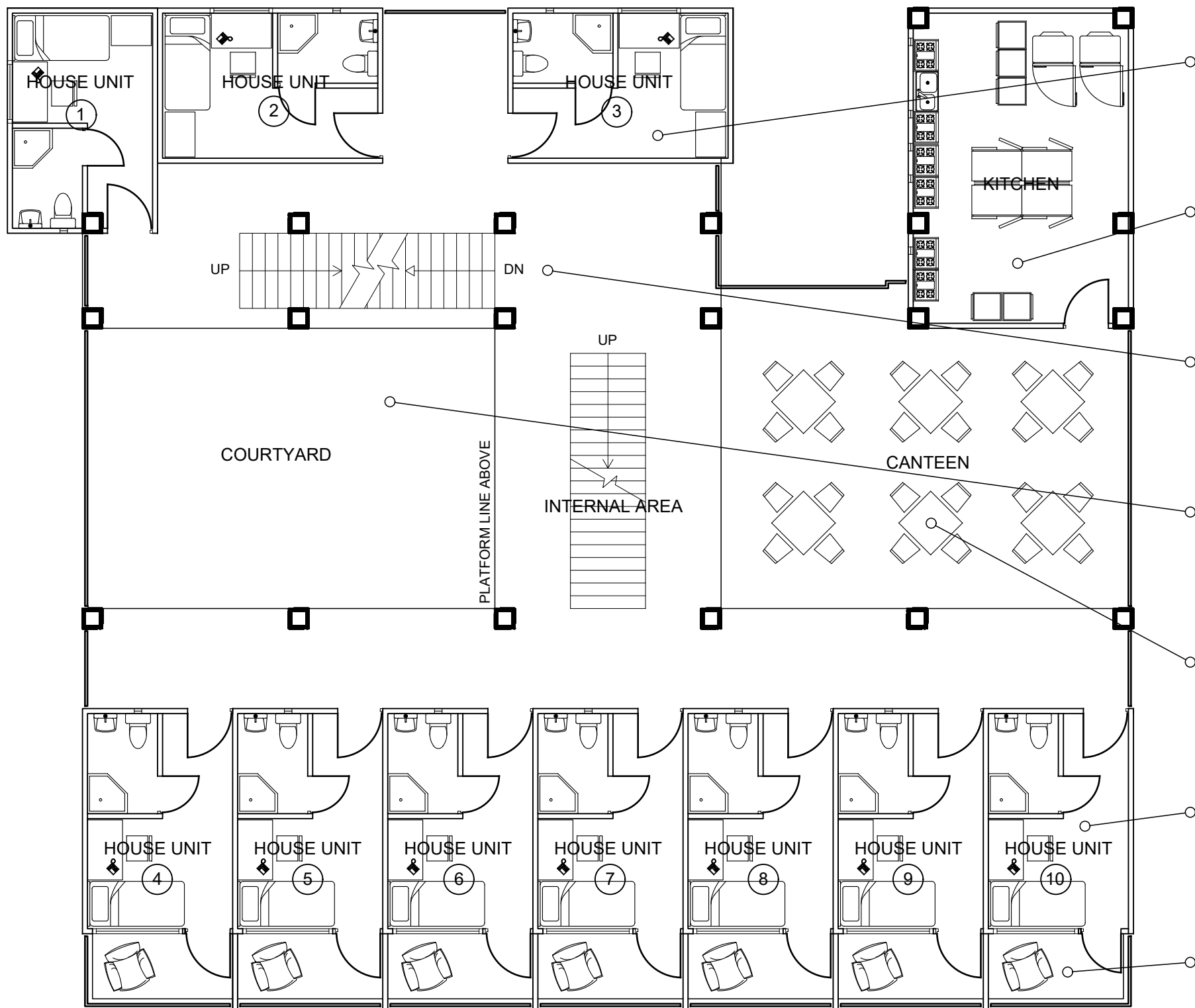
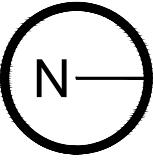

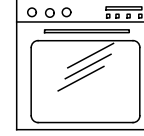
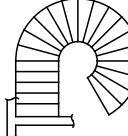
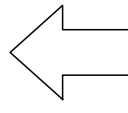
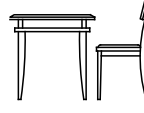

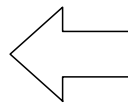
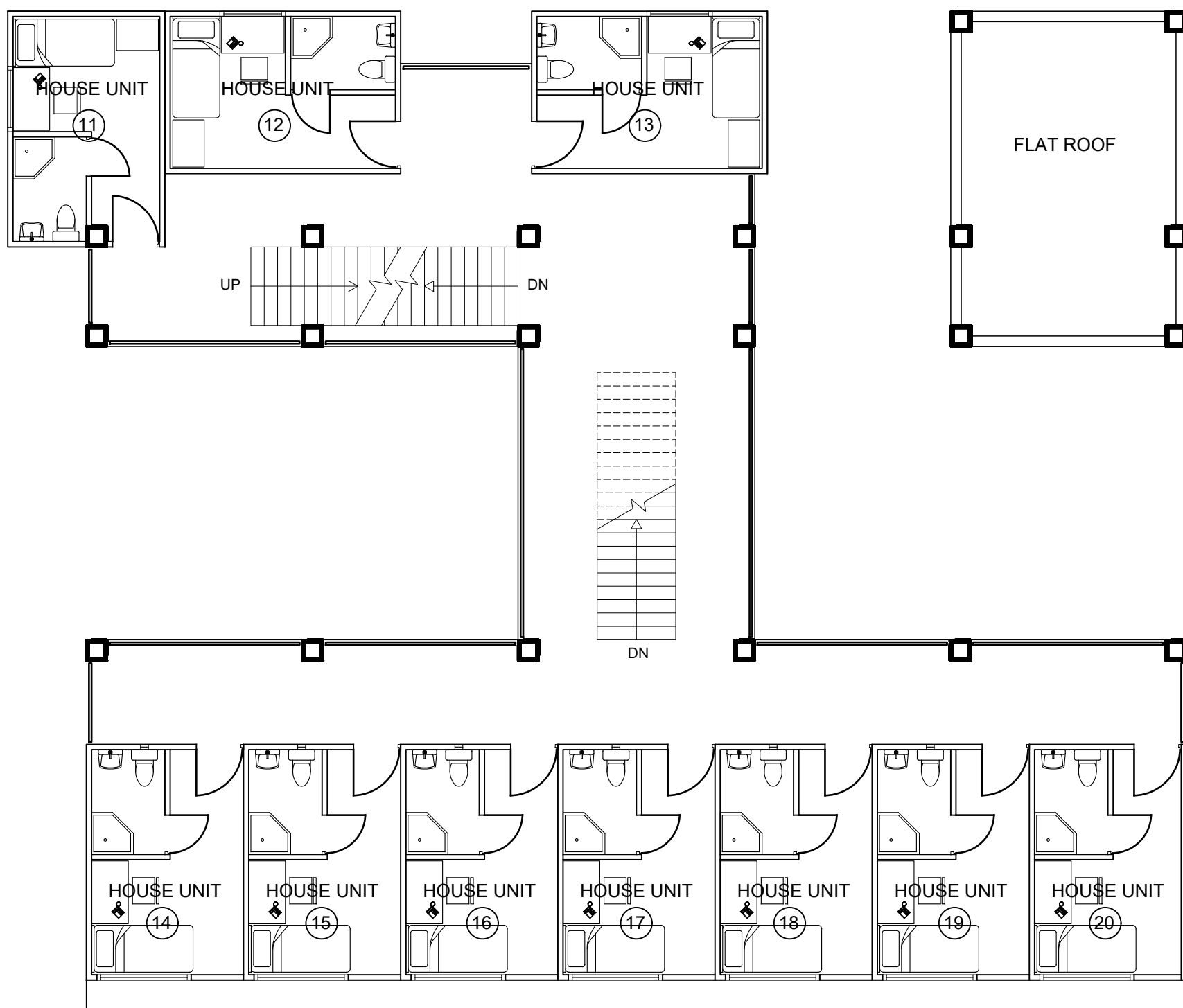


HOSTEL 1ST/ 2ND FLOOR PLAN



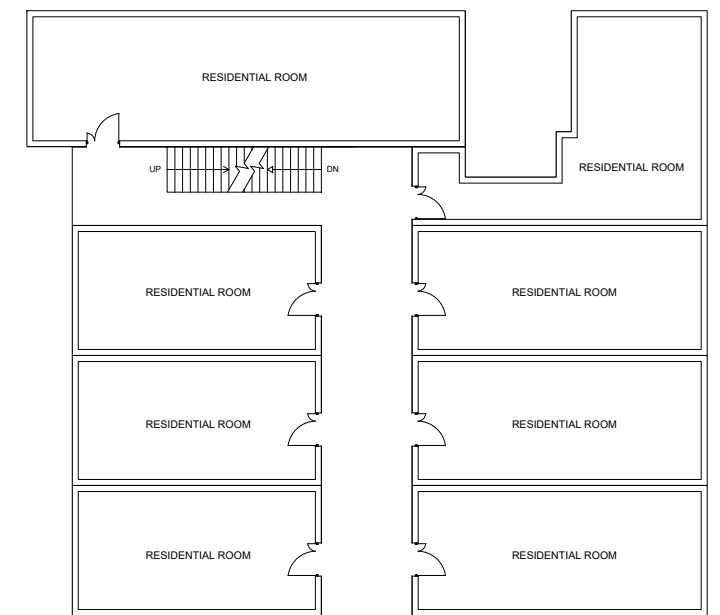
-  GOVERNMENT TEMPORARY HOSTEL FOR HOMELESS RESIDENTS AWAITING GOV. HOUSING ALLOCATION
-  "FOOD STAMP" FACILITIES INCLUDING KITCHENS TO ALLOW GOVERNMENT STAFF TO PROCESS/ PROVIDE FOOD
-  STAIRCASE LEADING TO THE EXISTING BUILDING, CONTINUATION OF PLAN OF BUILDING (CHECK BELOW)
-  COURTYARD ENCOURAGES VIEW OUT ON SOUTH END, BASED ON THE CENTRE OF HOSTEL AS SOCIAL GATHERING SPACE
-  SUFFICIENT DINING SPACE FOR EXPECTED NUMBER OF INHABITANTS IN THE HOSTEL (20)
-  EACH BED UNIT INCLUDES ALL THE BASIC NECESSITIES TYPICALLY FOUND WITHIN A HOSTEL
-  BALCONIES ENCOURAGE VIEW OUT ON THE EAST END OVERLOOKING A DISTANT PARK

1ST FLOOR PLAN
1:100

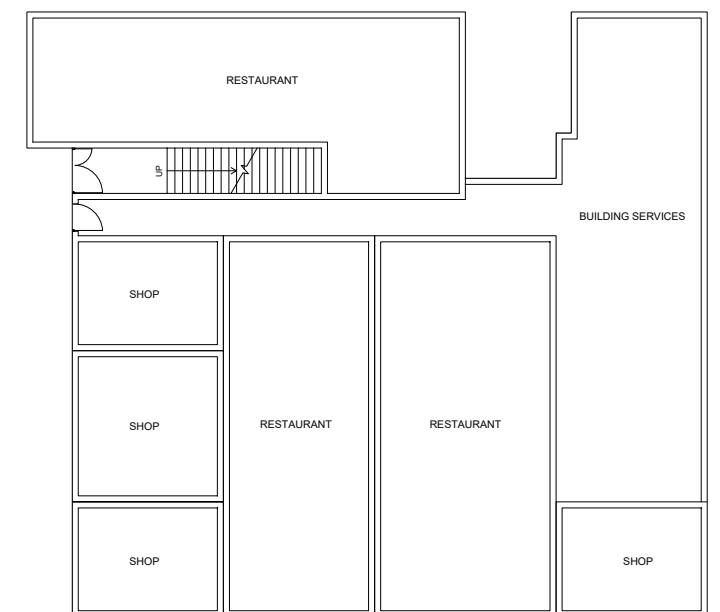


2ND FLOOR PLAN
1:100

EXISTING BUILDING PLAN
1:250



EXISTING BUILDING G/F



EXISTING BUILDING 1/F - 7/F