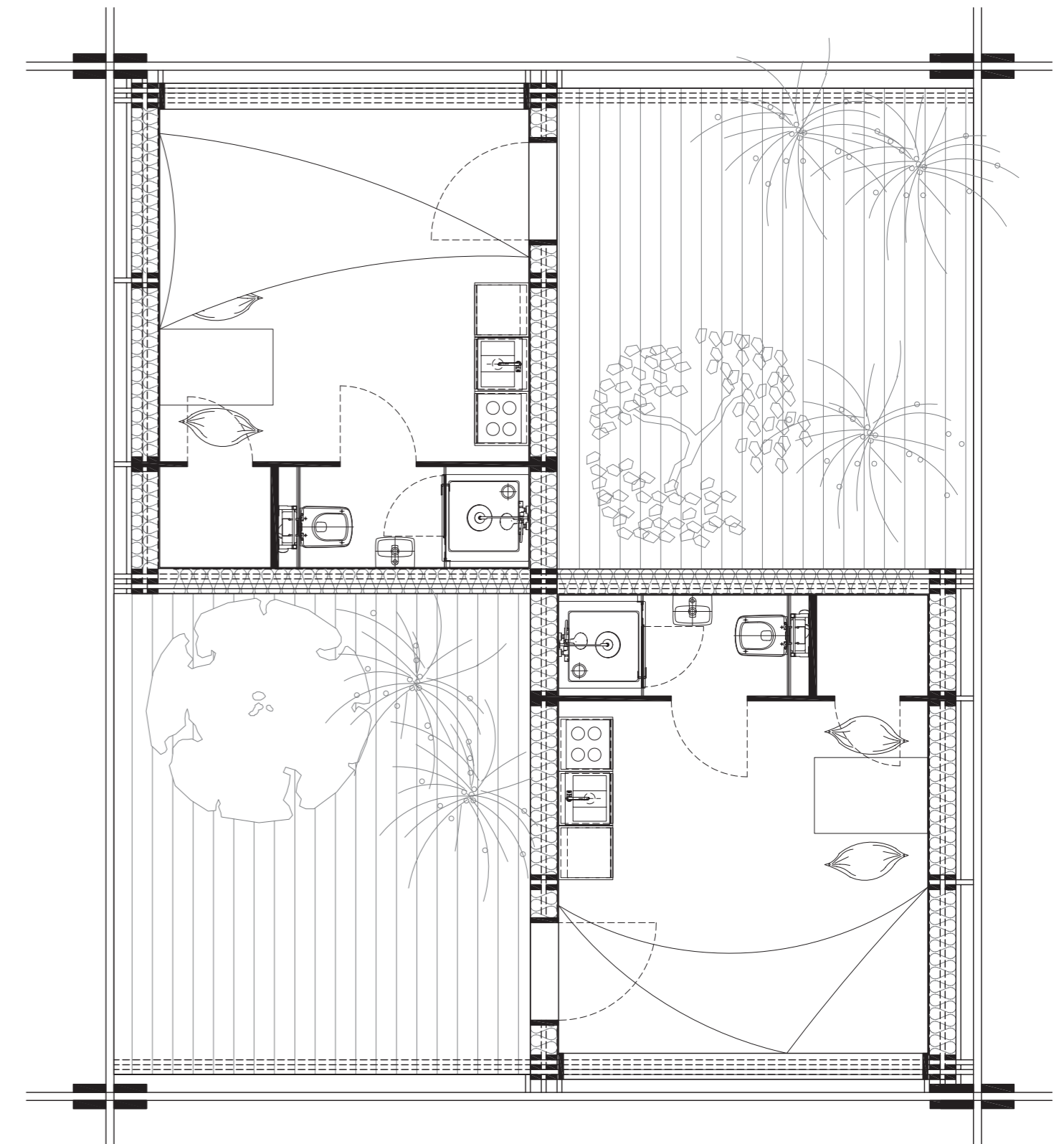
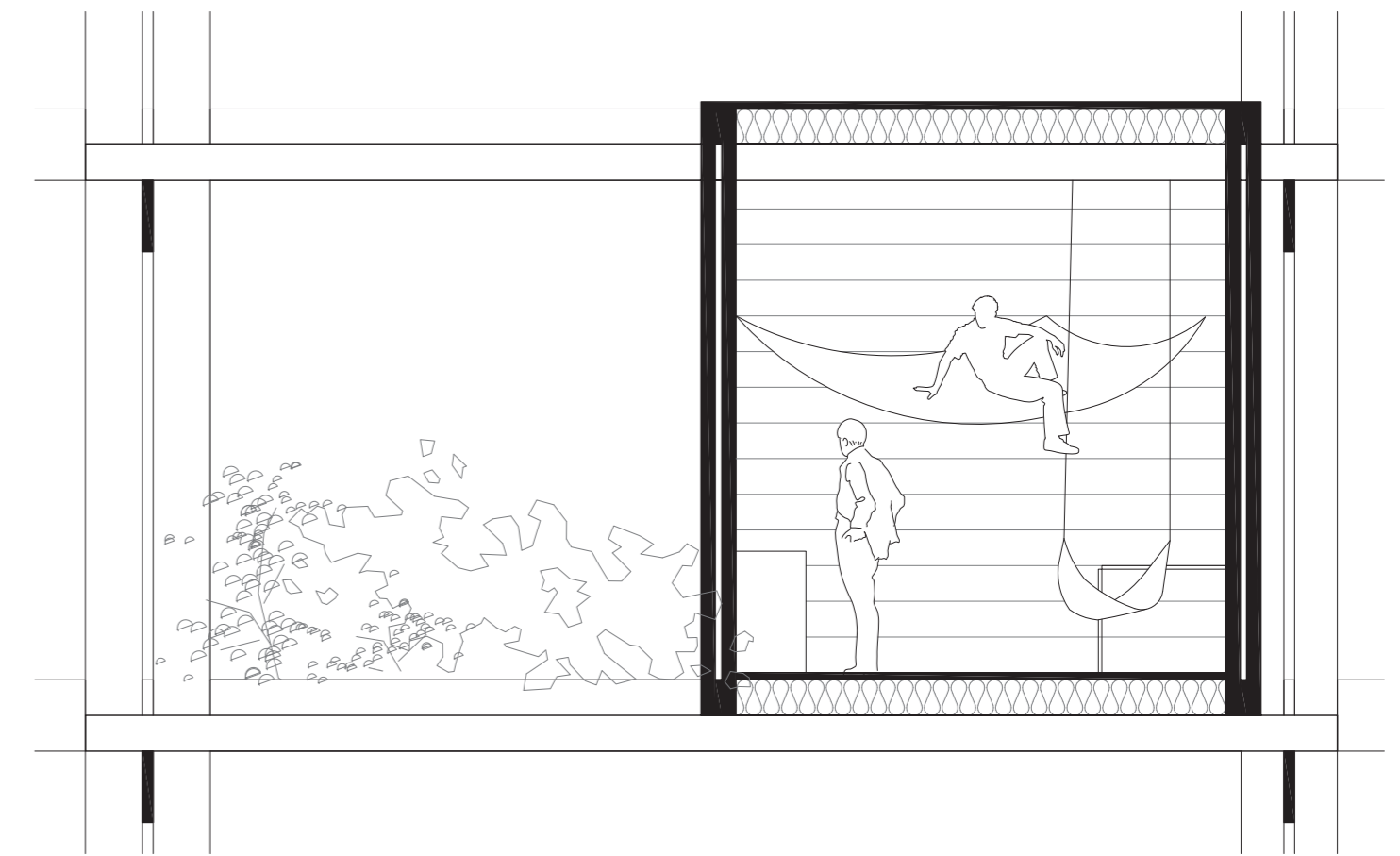


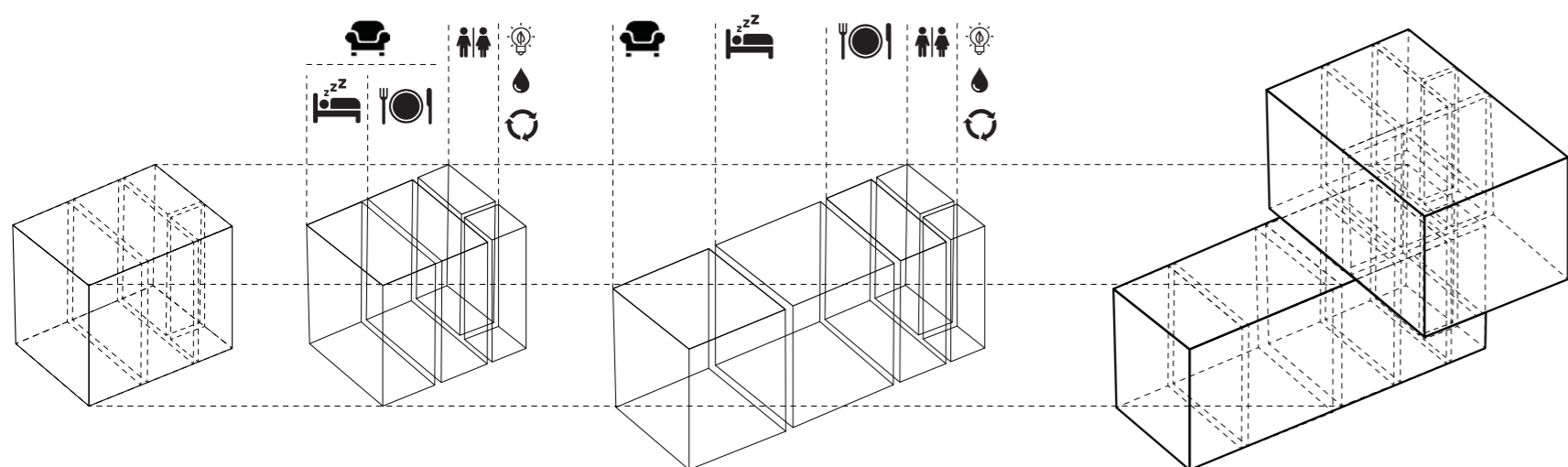
# Modern Nomads



Standard unit 14m<sup>2</sup>

Extended unit

Possible multiplication



Each dwelling consists of a few basic functional compartments, which can be **assembled** according to the needs of inhabitant and can be **extended** and **multiplied** over time. The simplest possible layout includes dining and sleeping compartment combined as one living space, a toilet unit and an energy + water facility block, resulting in 14m<sup>2</sup> of living space.

**Kerto panels** in the **interior space** serve as **supporting points** for textile furniture, which enable customisation of the spaces. Furthermore, combining the soft materials - **Kerto wood** and **textiles** - creates cosy spaces and relates to **nomad culture**.



Plan and section of a basic housing unit, 1:50