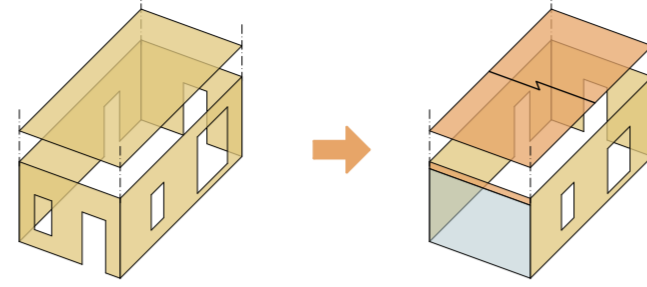


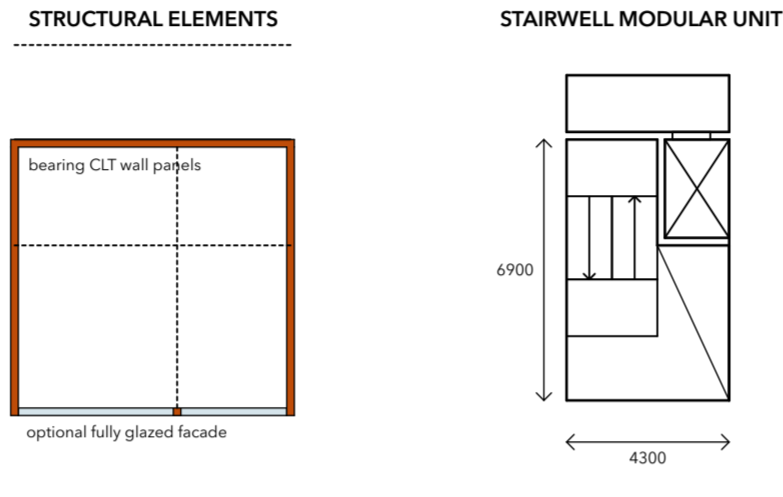
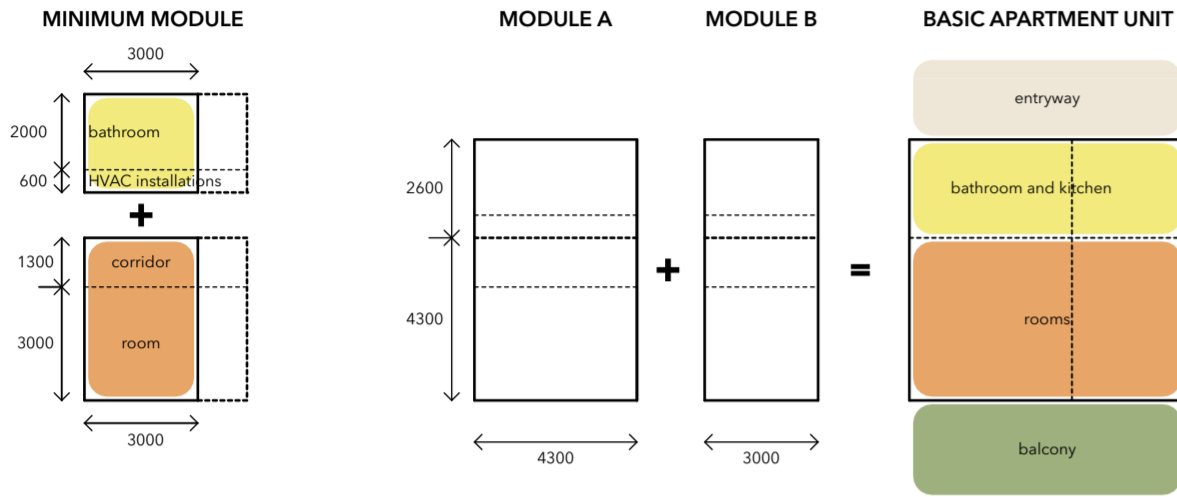
PLUG-IN

Archigram's Plug-in city was a visionary manifesto of new megastructures on top of the existing city. Their trailblazing approach opened the doors to new way of thinking architecture and urban planning. Fifty years later the Plug-In model is scaled down to the building level in a powerful yet realistic concept. New wooden structures are superimposed to existing buildings. The vertical connections (stairwells and HVAC shafts) are organized as independent new elements, hence the Plug-In buildings are fully independent structures, acting as benign parasites to the present city fabric. The combination of 2 basic modules allows for multiple housing solutions to address contemporary multifaceted needs.

PURE CLT SYSTEM NEW HYBRID SYSTEM



Using only CLT elements limits opening sizes in all facades. A hybrid system using **MetsäWood LVL** elements frees completely one exterior facade and can reduce slab thickness.



MULTIPLE COMBINATIONS FOR MULTIPLE DWELLERS



Interior view of apartment with A+B units, double height

TYPICAL APARTMENT UNIT: MODULE A+B

