



# Kerto® LVL railway crossing panels

Kerto LVL railway crossing panels are suitable for rail level crossings with limited traffic densities or for pedestrian and bicycle crossings. The durability and wear resistance of the Kerto LVL panels is found to be high compared to other wooden rail crossing panels during several years of real-life use in Finland.

Kerto LVL is produced by gluing 3 mm thick rotary peeled spruce veneers. The glue lines of the product are weather-resistant. The material of crossing panels is Kerto-Q, which contains about 20% of cross-wise glued veneers. Cross-wise structure minimizes the moisture swelling and the risk of twisting and cupping of the panels.

The rail crossing panels can be designed to fit the different crossing types and also for curves. The profile of the panels can be designed so, that the same profile can be used for different track types. This minimizes the need for case-specified design and instructions.

Protective treatments, like pressure impregnation or surface treatments, are not needed. The durability of the untreated product is sufficient for the desirable service life.

## BENEFITS OF KERTO LVL RAILWAY CROSSING PANELS

- Minimal moisture deformations and no warping or twisting
- Ease of installation and fastenings
- Wearing resistance of the surfaces
- Possibility to design standardised panel profiles
- No pressure impregnating or chemical treatments

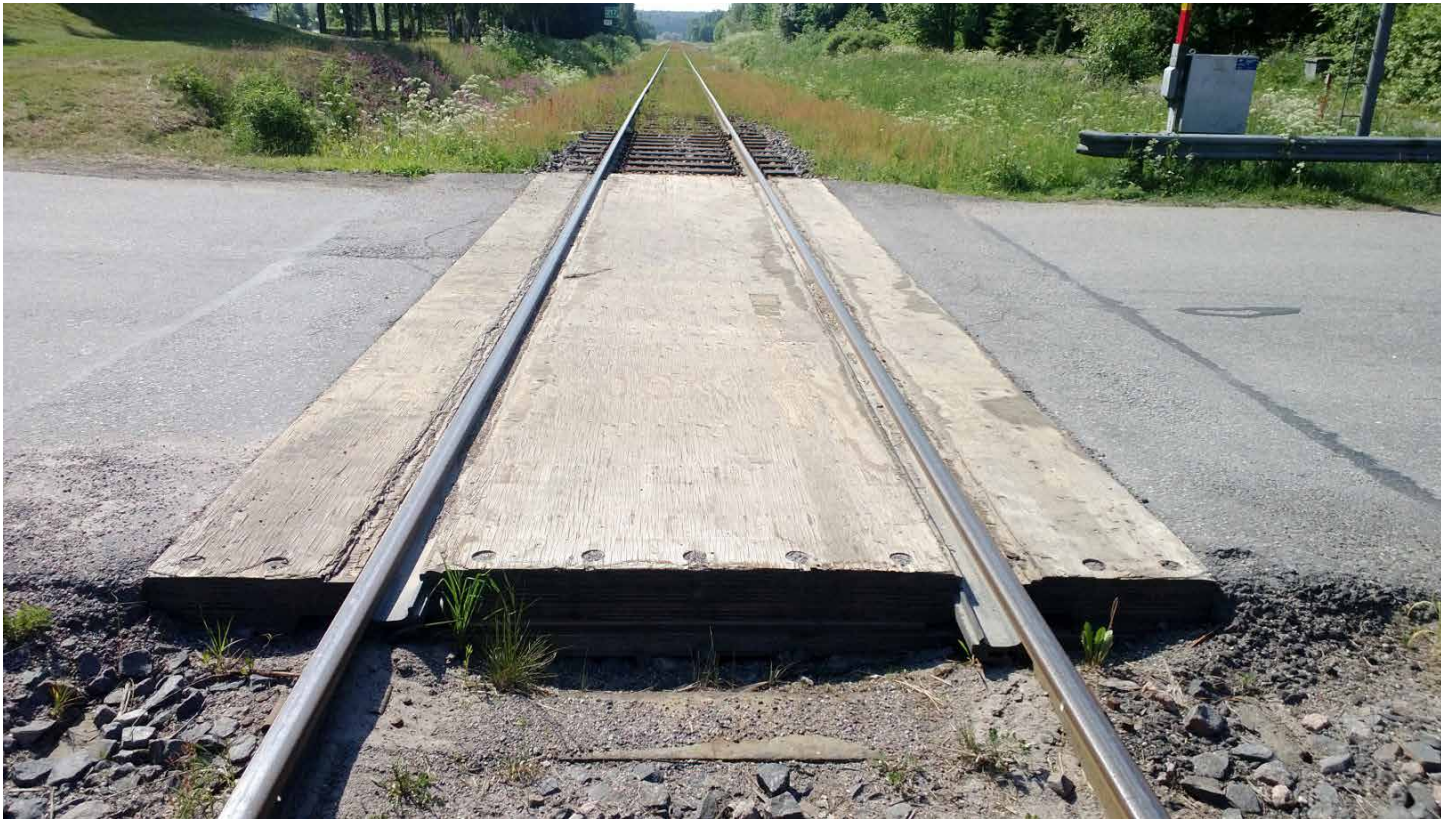


## EXCELLENT DURABILITY

The first generation of Kerto LVL railway crossing panels in Finland have been serving for 8 - 9 years without need for replacing; resisting all the stress caused by traffic itself and changing weathers including winter maintenance and studded tyres.

The train traffic density in crossings with Kerto LVL panels in Finland are up to 200 trains per day and automotive traffic density even up to 3000 vehicles per day depending on the total density of both together.

The service life of the crossing panels in an environment depends on the traffic density and weather conditions.



Kerto LVL railway crossing panel after about 6 years service in Finland.

### MORE INFORMATION ABOUT KERTO LVL:

[WWW.METSAWOOD.COM/PLYWOOD](http://WWW.METSAWOOD.COM/PLYWOOD) →

### METSÄ WOOD

Lohja Kerto mill  
P.O.Box 24 (Tehtaankatu)  
08101 Lohja FINLAND  
Tel. +358 1046 56499

This leaflet is provided for information purposes only and no liability or responsibility of any kind is accepted by Metsä Wood or their representatives, although Metsä Wood has used reasonable efforts to verify the accuracy of any advice, recommendation or information. Metsä Wood reserves the right to alteration of its products, product information and product range without any notice.

