



# WALKSURE®

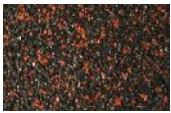
## LOW-SLIP DECK BOARD

WalkSure® low slip decking combines rubber and pressure treated softwood deck board.

The resulting product provides not only an attractive and colourful alternative to traditional timber decking but also a safe, low slip surface in wet or dry conditions, ideal for play areas and pool surrounds. WalkSure is rated as 'low potential for slip' tested to BS 7976 part 2. Other applications include public walkways, outdoor smoking facilities, leisure complexes, hotels, pubs and clubhouses.



AVAILABLE COLOURS:



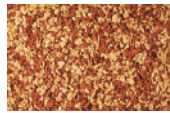
Charcoal/red



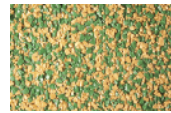
Red/charcoal\*



Charcoal/green\*



Sand/red\*



Sand/green\*



Sand/brown\*



Red/brown\*

NOTE: \* THESE PRODUCTS ARE AVAILABLE TO SPECIAL ORDER



PRECISION  
FINISH



15  
YEAR  
GUARANTEE



PRESERVATIVE  
TREATED



KILN DRIED



LOW  
MAINTENANCE



LOW SLIP

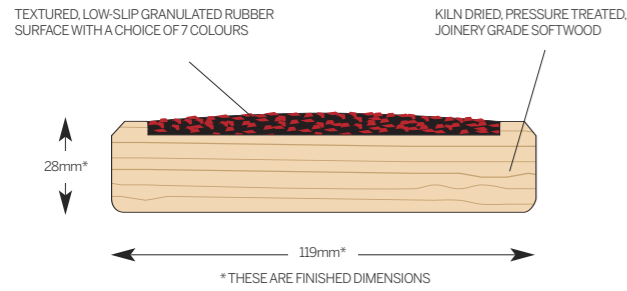


Scan this code with your  
SMART phone to view online  
deck installation videos or visit  
[www.metsawood.co.uk](http://www.metsawood.co.uk)



# TECHNICAL INFORMATION

WalkSure® is a low slip, low maintenance deck board which combines Granulated rubber and pressure treated softwood. Independently tested to BS7976 Part 2, WalkSure® conforms with UK slip resistance guidelines and is rated as providing 'low potential for slip'. This 'low-slip' rating is achieved across, diagonal to and along the board length.



BOARDS ARE AVAILABLE IN 3.6M AND 4.2M LENGTHS

## COMPONENT INFORMATION - TIMBER DECK BOARD

Species	European Redwood (Pinus Sylvestrus)
Country of origin	Nordic sources
Nominal size	32 x 125mm
Finished size	28 x 119mm
Lengths available	3.6m & 4.2m
Grade	5th joinery grade
Certification	PEFC Environmental
Treatment Tanalith	"E" Pressure Impregnated

## COMPONENT INFORMATION - COLOURED EPDM/CHARCOAL SBR

Wear ratio	Tested to B.S 5696 Part 3 with a wear ratio of between 1.14 and 1.36
Density	800 kg/m <sup>3</sup>
Flammability	B.S 4790 (Hot Metal Nut Test) Time from application of nut to extinction: 383-425 seconds. Greatest Radius of affected area 19-20mm. Classification: Low radius of ignition
UV stability	B.S 1006 light fast to 7 (Lifespan dependent of type of surface wear/application and location)
Permeability	Rubber compound is porous, flow rates are determined by the type of base substrate on which the material is laid. (Nominal 50 LTS/M <sup>2</sup> at 0.2 Bar)
Sound damping	Up to 30db reduction
Binder	A low viscosity, solvent-free, single component, moisture curing binder based on polyether polyols
Granule size	1-4mm Tested according to EN933 part 1
Granule shape	Tested according EN14955

## ADDITIONAL INFORMATION - FIRE FIGHTING MEASURES

Suitable extinguishing media	Polyvalent foam, carbon dioxide, Sand / earth
Special exposure hazards	On burning or exposure to extreme heat: release of toxic and corrosive gases (including oxides of carbon and nitrogen, ethylene, propylene, copper and mono-ethanolamine)
Instructions	Dilute toxic gases with water spray, full protective clothing and self-contained breathing apparatus should be worn for fire fighting

## PRODUCT BENEFITS

- Enhanced, safe grip. Conforms to BS7976 Part 2
- Reduces noise level
- Reduces the risk of injury should a fall occur
- Easy to cut and install
- Long life, hard-wearing with low maintenance.
- 15 year guarantee\*
- Available in 7 colours

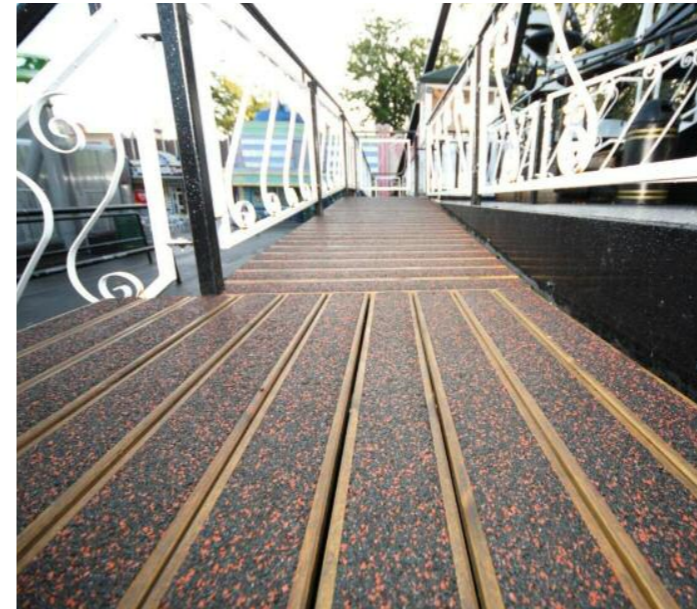
## INSTALLATION

Metsä Wood recommend WalkSure® deck boards are face fixed with two 63mm coated deckscrews at each joint. Screws should be driven down below the surface of the rubber inlay which hides the screw's head and provides maximum hold. Metsä Wood approves the use of the Deck-Tite 4.5 x 63mm Tri-Lock green coated deck screw.

If deck boards are cut the sawn ends should be re-treated with a suitable timber preservative. Supports should be set at a maximum of 400mm centres.

A slight fall should be incorporated into the design to help improve drainage.

# WALKSURE® APPLICATIONS



WALKWAYS (DRAYTON MANOR THEME PARK)



CAFÉ AND BAR AREAS (EDINBURGH ZOO)



WALKWAYS AND STEPS, METSÄ WOOD, (BOSTON)



POOL SURROUNDS AND PLAY AREAS (AQUAGEM, ESSEX)



For more information and a list of stockists in your area visit [www.metsawood.co.uk](http://www.metsawood.co.uk) or call 0800 00 44 44

Metsä Wood is a wood products company delivering service-oriented solutions developed in collaboration with its customers. Its premium solutions are based on ecological, high quality Nordic wood as a raw material.

Wood is the only building material that is truly renewable, if well managed. Forest certification schemes give assurance that the timber is legal and from sustainable sources. Metsä Wood sources certified timber over uncertified and is an approved Chain of Custody supplier.

MW0267 March 15.

The photographs in this brochure are for illustration purposes only.

Metsä Wood reserves the right to change the range without notice.

Every effort has been made to ensure that colours are accurate within the limitations of natural lighting conditions and the four colour printing process.

**METSÄ WOOD**

Telephone: 0800 00 44 44  
Email: [uk@metsagroup.com](mailto:uk@metsagroup.com)  
[www.metsawood.co.uk](http://www.metsawood.co.uk)

